



NORWICH
Historical Society
and Community Center

HISTORIC DRIVING TOUR

— NORWICH RIVERS & MILLS —

A Companion to the Norwich Historic Audio Tours

*** Start of Driving Tour: Norwich Historical Society**
277 Main Street

Start here and return. Continents collided, mountains tilted up. Mile-thick glaciers carved through the earth. Millions of years of water contoured this place. It's the origin story of this place we call home.



1 The Mills at Blood Brook
Elm Street Bridge

The ledge outcroppings at Blood Brook, pressed upward over millions of years, created a natural spot for harnessing water into ponds to power mills.



2 Mechanic Street, or Hopson Road
8 Hopson Road

This area of Hopson Road was populated by day laborers and mechanics working at blacksmith and carpentry shops.



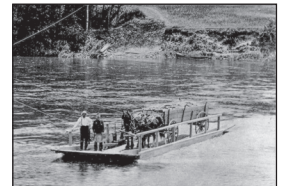
3 Pattersonville
12 Campbell Flats Road

This is the site of the former Pattersonville Chair Company factory village, complete with worker housing, a general store, dance hall, and mill.



4 Old Bridge Road Boat Ramp
Ompompanoosuc River Boat Ramp

This road used to be Route 5. The Route 5 bridge crossed here.

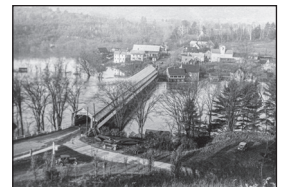


5 The View from Old Bridge Road
Intersection of Old Bridge Road and Route 5

Across Route 5, Kendall Station Road leads to what was once a busy railroad station for freight, the Pattersonville Chair Company, and the Strafford copper mine.

6 The River as a Transportation Artery
Intersection of Route 5 and Hemlock Road

Several vital transportation corridors, as well as a timeline of transportation history, can be seen from this location. The Connecticut River, the railroad, Vermont State Route 5, and Interstate 91 followed one after another through time.



7 Norwich Pumping Station
635 US Route 5

65,000 gallons of water a day, on average, are pumped from a well up to a holding tank on Dutton Hill. That water is then pumped back down to serve people in the Norwich village Fire District.

8 Lewiston
Ledyard Lane off River Road

The Lewiston area was home to Norwich's first settlers, an important crossing to Hanover, and a transportation hub for Dartmouth. Much of the village was razed for the interstate in 1967.

Norwich Historical Society
277 Main Street
Norwich, VT 05055
www.norwichhistory.org
802.649.0124

Credits: Historic Preservation Commission, Town of Norwich • Norwich Historical Society
Dartmouth Printing Company • CATV

Information for this podcast drawn from Hartgen Archaeological Associates area survey, the writings of Brian Dade in *Norwich, Vermont: A History*, and in *Proud to Live Here in the Connecticut River Valley of Vermont and New Hampshire*, by Richard Ewald with Adair Mulligan. Thank you! Special thanks to the National Park Service for its contribution through the Certified Local Government Program, administered by the Vermont Division for Historic Preservation.



NORWICH
Historical Society
and Community Center

HISTORIC DRIVING TOUR

— NORWICH RIVERS & MILLS —

A Companion to the Norwich Historic Audio Tours

